

# HUNTERS®

HERE TO GET *you* THERE



## Westow Hill, London Asking Price £250,000

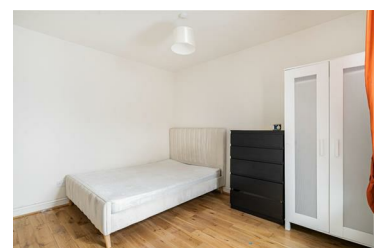
Council Tax:

Tenure: Leasehold



A two-bedroom flat in one of SE19's most desirable residential pockets, offering, excellent rail connections from Crystal Palace & Gipsy Hill, access to major parks and green space, outstanding leisure facilities and community amenities...

- 2 bedroom
- Raised Ground Floor
- Open plan
- Great location within "Crystal Palace triangle"



10A Dartmouth Road, Forest Hill, SE23 3XU  
Tel: 020 3002 4089 Email: [foresthill@hunters.com](mailto:foresthill@hunters.com)  
<https://www.hunters.com>